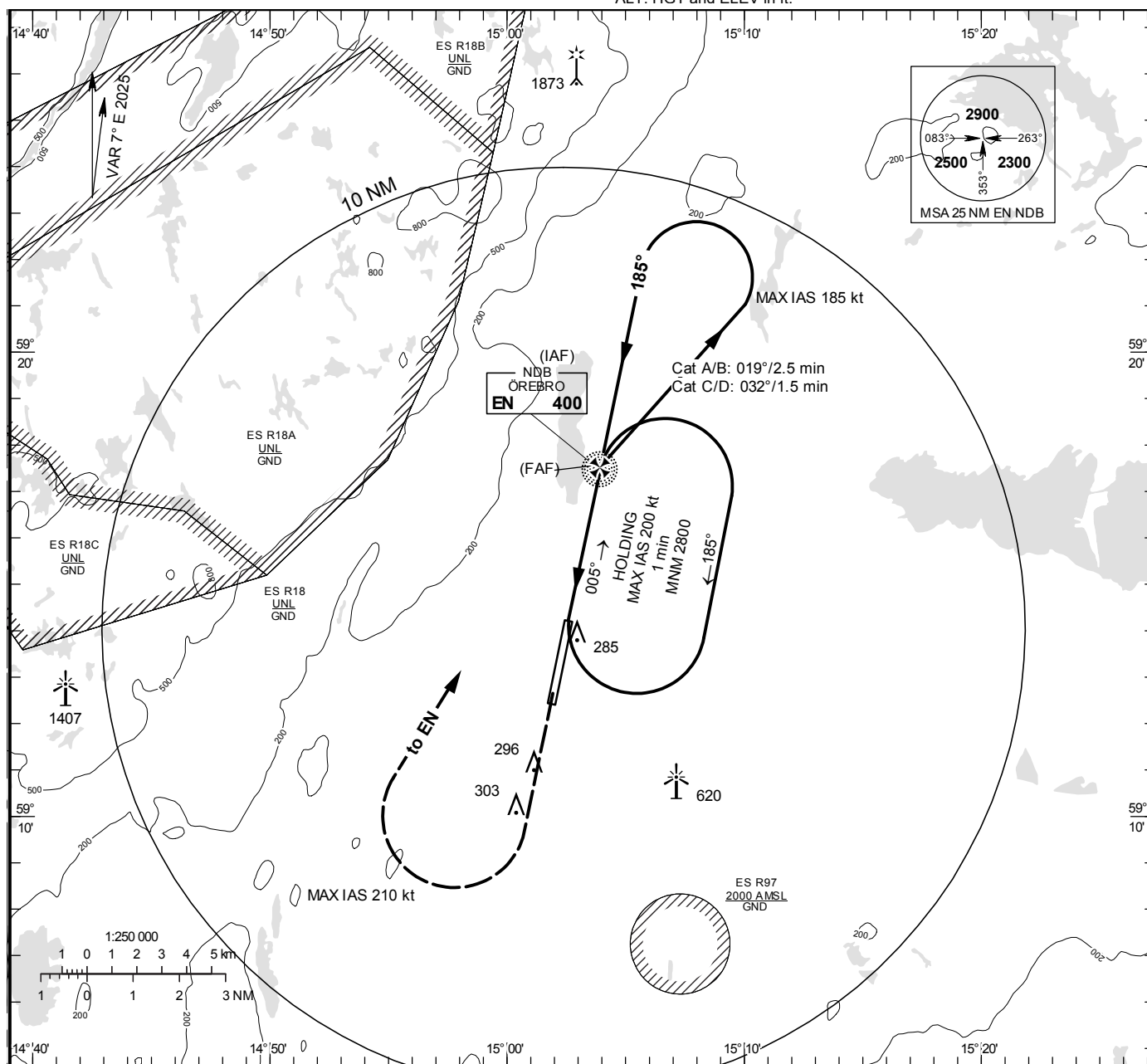


NDB RWY 19

ÖREBRO TOWER	120.280
--------------	---------

OCH are related to THR.
 Circling OCH are related to AD ELEV.
 BRG are MAG
 ALT, HGT and ELEV in ft.

INSTRUMENT APPROACH CHART – ICAO



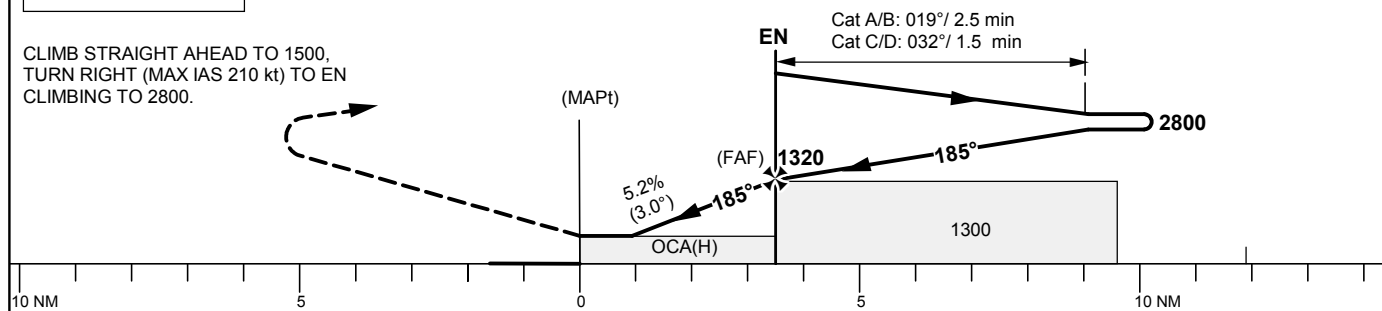
TA 5000 ft AMSL

*No turn before MAPt

MAX SPEED within base turn 185 kt IAS

MAX SPEED within missed approach turn 210 kt IAS

CLIMB STRAIGHT AHEAD TO 1500,
TURN RIGHT (MAX IAS 210 kt) TO EN
CLIMBING TO 2800.



OCA (H)					Final approach	Distance FAF-MAPt 3.4 NM*						
Cat of ACFT	A	B	C	D	NOE DME NM	2			3			
Straight-in Approach	540 (350)				ALT	820			1140			
Circling	600 (410)	690 (500)	1020 (830)		GS	kt	80	100	120	140	160	180
					Time	min:s	2:31	2:01	1:41	1:26	1:16	1:07
					Rate of descent	ft/min	425	530	635	745	850	955